

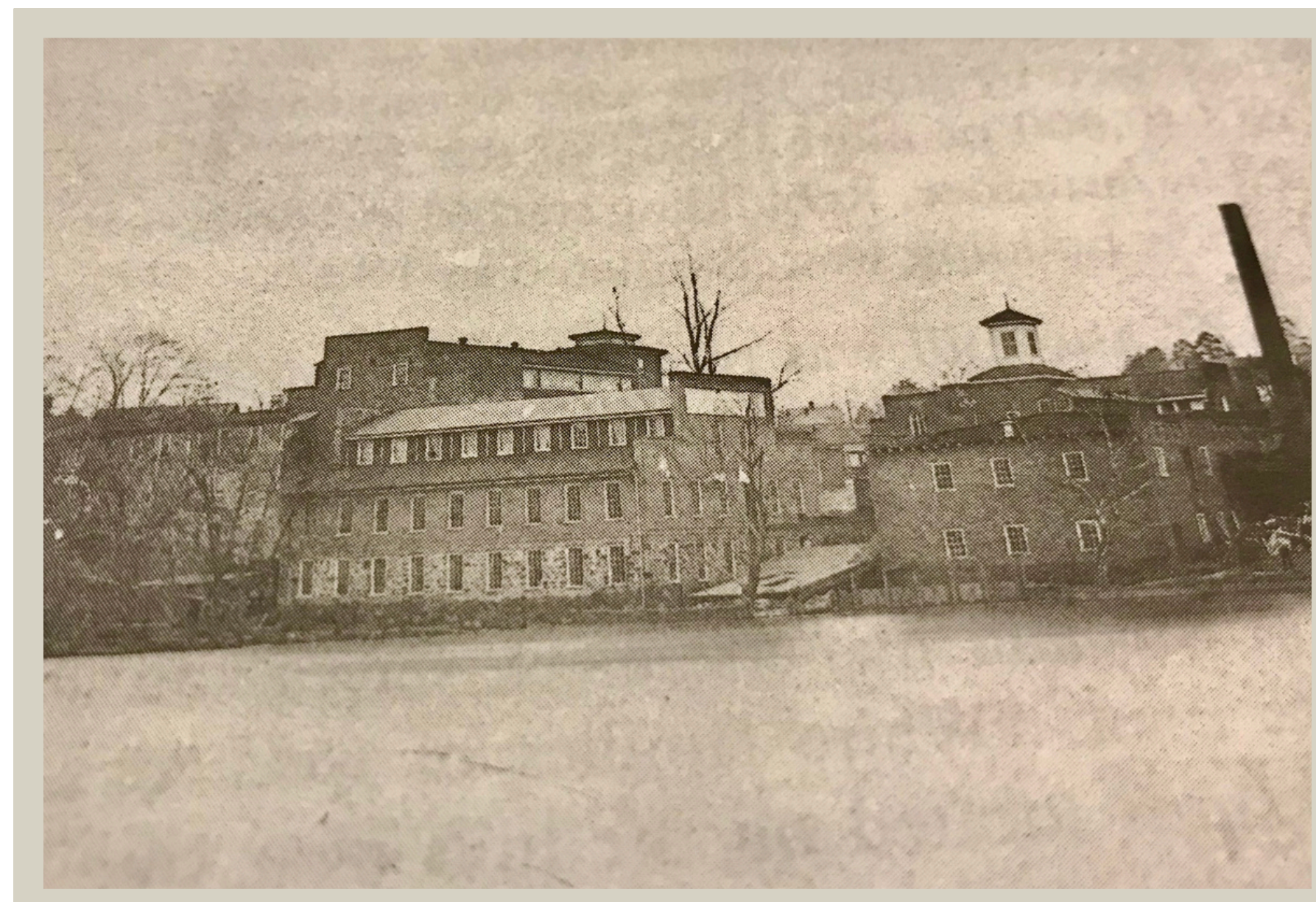
Athens Factory Self-Guided Tour



UNIVERSITY OF
GEORGIA
School of Social Work



STOP 1. School of Social Work entrance (1st floor)

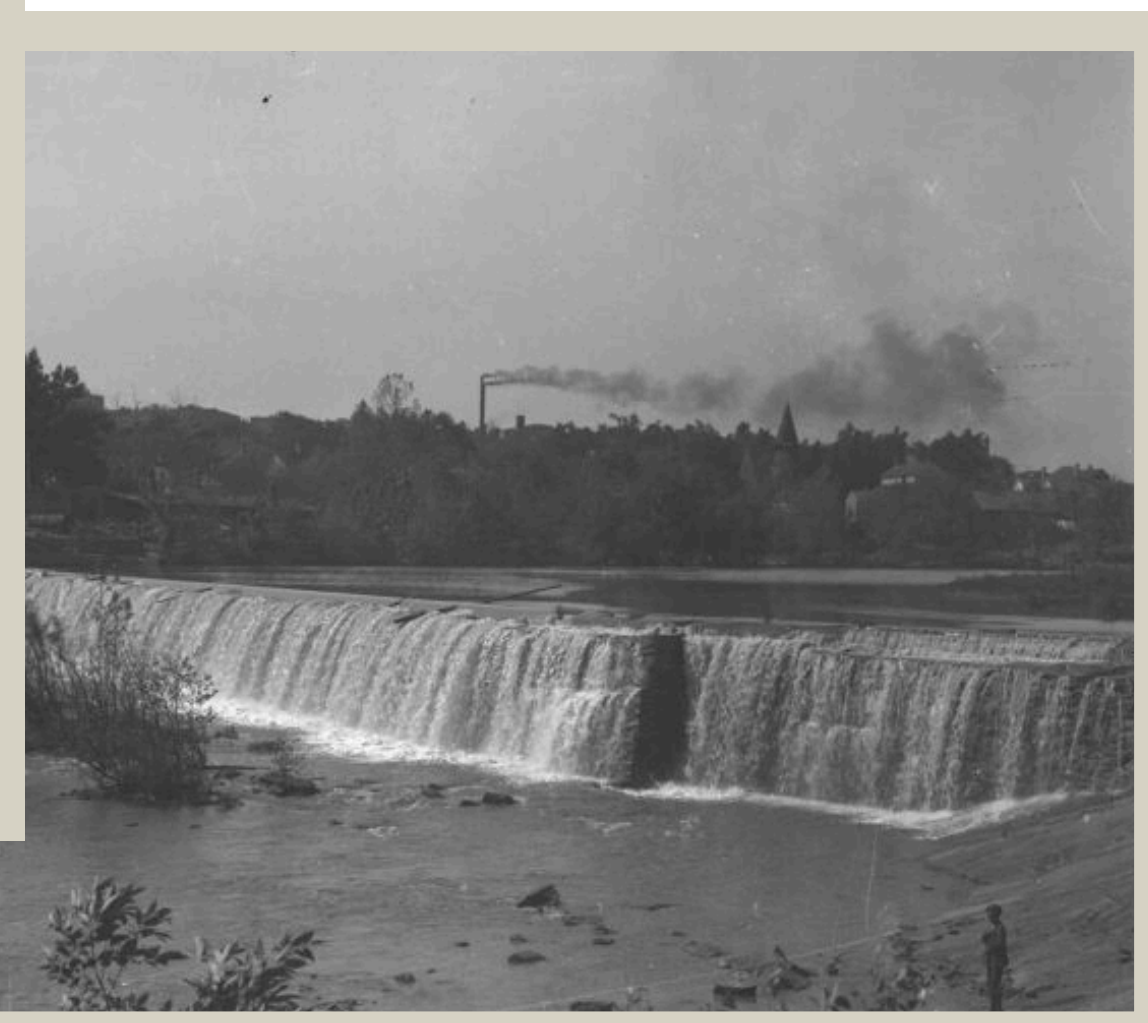
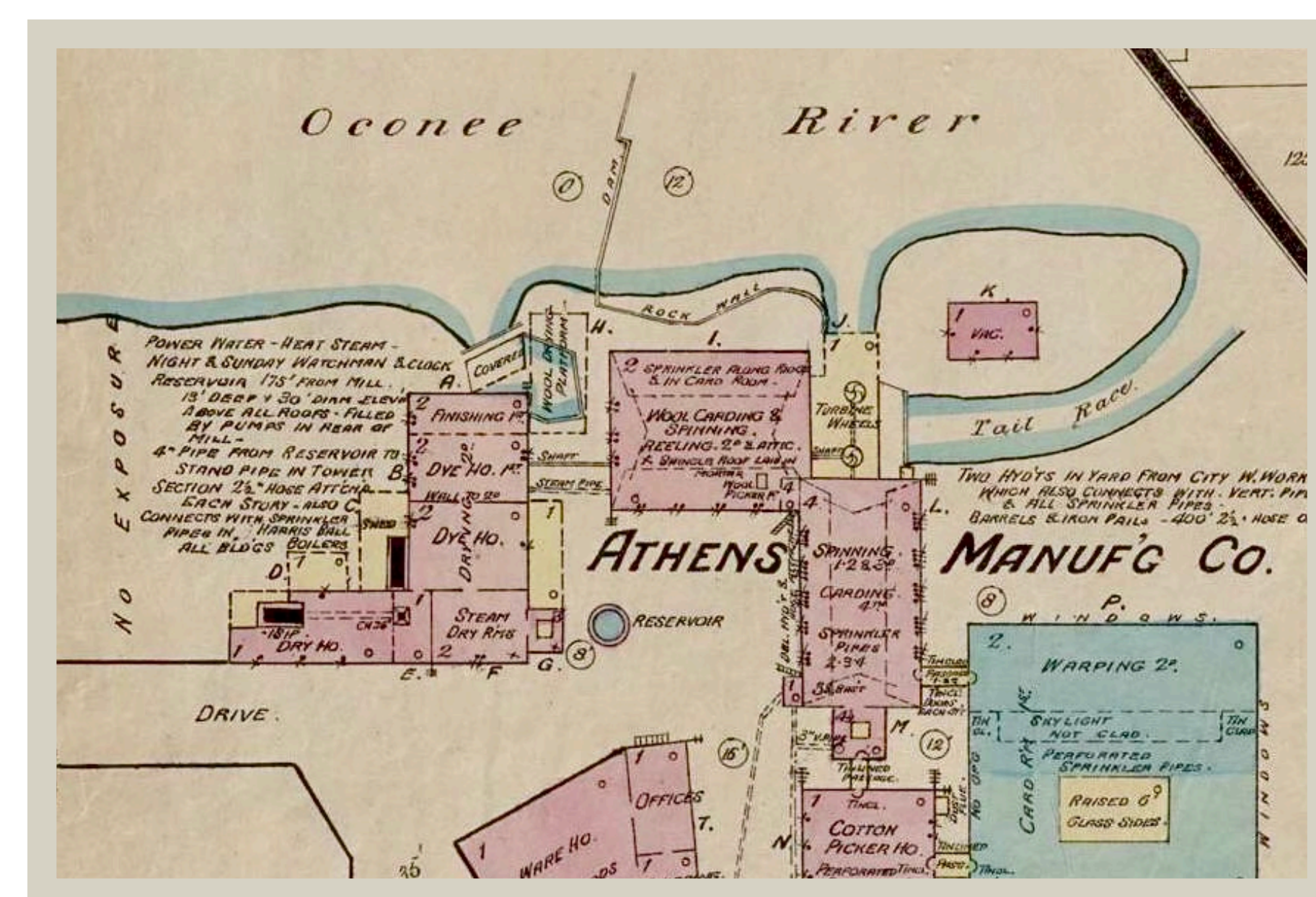


- The ~1900 photo of the Athens Factory shows its former dye house
- Read the story of reformer Louie Lane and admire her afghan

STOP 2. Lounge (basement)

via stairs or elevator

- The Student Lounge is located in the factory's former wheelhouse (the mill's power center)
- Look out the windows to see where the millrace exits from under the building



proceed outside

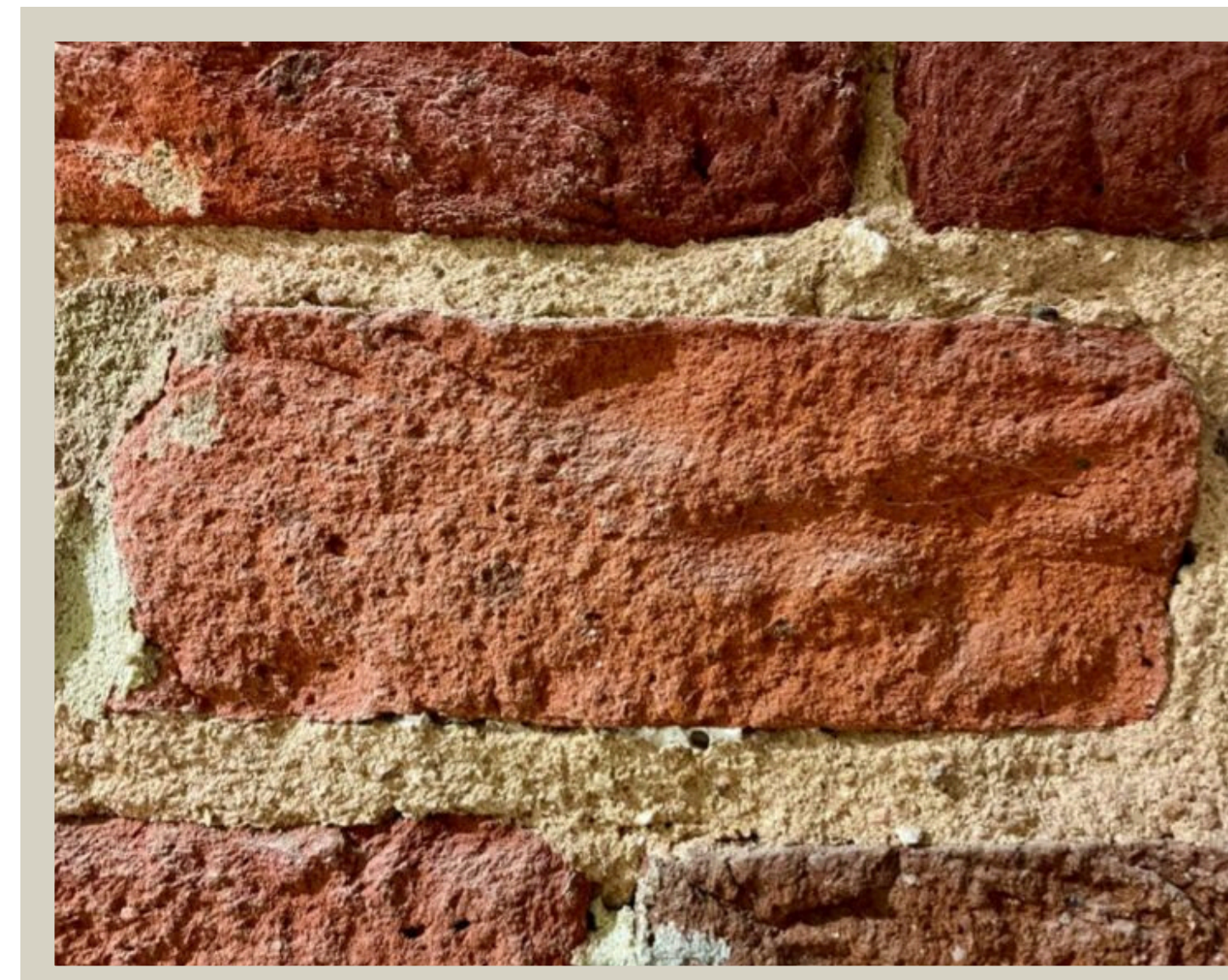
STOP 3. River deck

- The deck crosses over the millrace, whose waters powered the factory; the gate rose and lowered to control the water's flow
- Remnants of the 1840s dam are visible from the deck
- Enjoy the view over the North Oconee River

STOP 4. Room 215 (2nd floor)

via stairs or elevator

- This room has the best views over the dam, the river, and the millrace
- The 19th-century bricks in these walls (and in many throughout the building) were almost certainly made by enslaved workers



via stairs or elevator **STOP 5. 3rd floor**

- Faculty offices now fill the factory's former cotton wing (the photo at left shows the factory floor during its 1978 remodel).
- Imagine this floor filled with millworkers: men, women, and children; both enslaved and free.



Jane McPherson at jmcpherson@uga.edu



[complexcloth1832](https://www.instagram.com/complexcloth1832)



[complexcloth.org](https://www.complexcloth.org)